

Chapter 2 – How to Access the STANDALONE Goldmine Finder CD Version and Use it on Your Computer

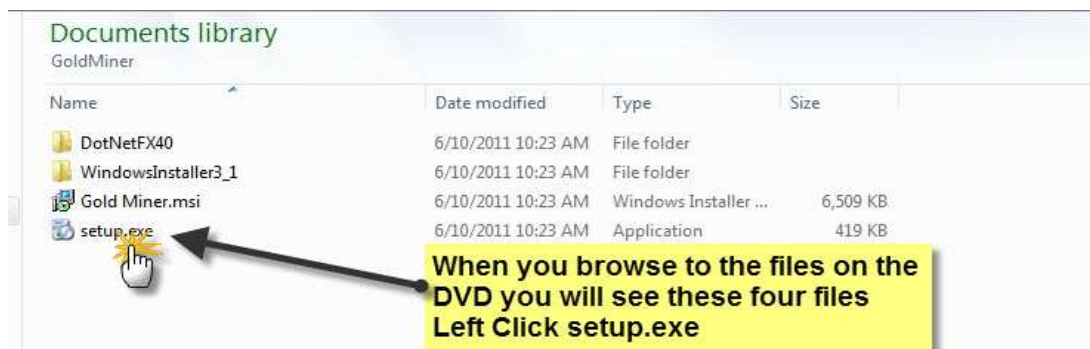
2.0 Transferring the CD Standalone Version of Goldmine Finder to Your PC

You will have gone through the payment process and received a CD in the mail

2.11 Explore to Your CD on your Computer

Place the CD into your PC and explore to its contents - It will contain the Instructions document (This Instruction Manual) and a number of files – the IMPORTANT ones are listed below.

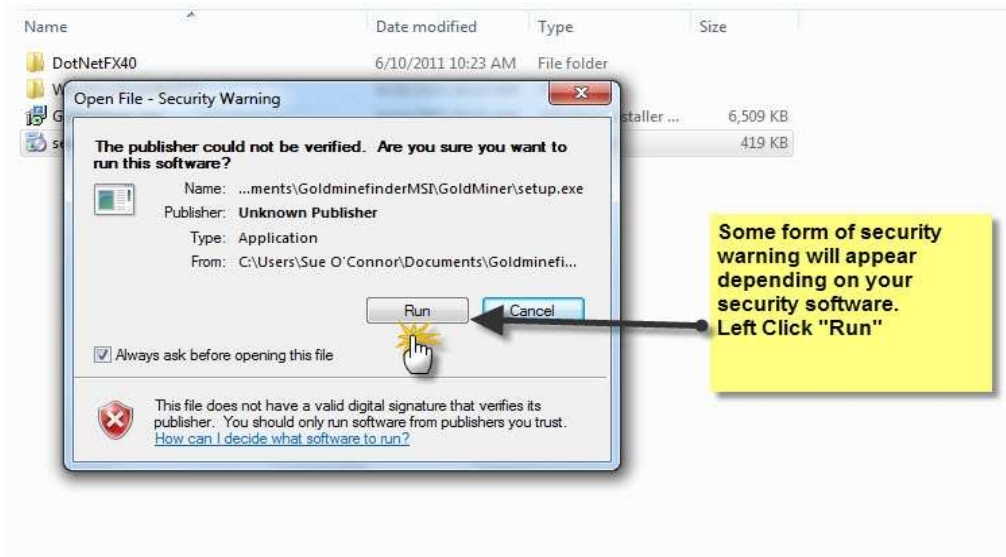
There will also be a the Instructions Manual on this file



2.12 Download - Security Warning

After you click on the “setup.exe” file which will instal all the components required for your PC a form of security warning will appear depending on your security software.

Goldmine Finder – Instruction Manual to Find Old Gold Mine Locations in WA



Just click “Run” and the next step in the installation procedure will commence,

2.13 Goldmine Finder Setup Wizard

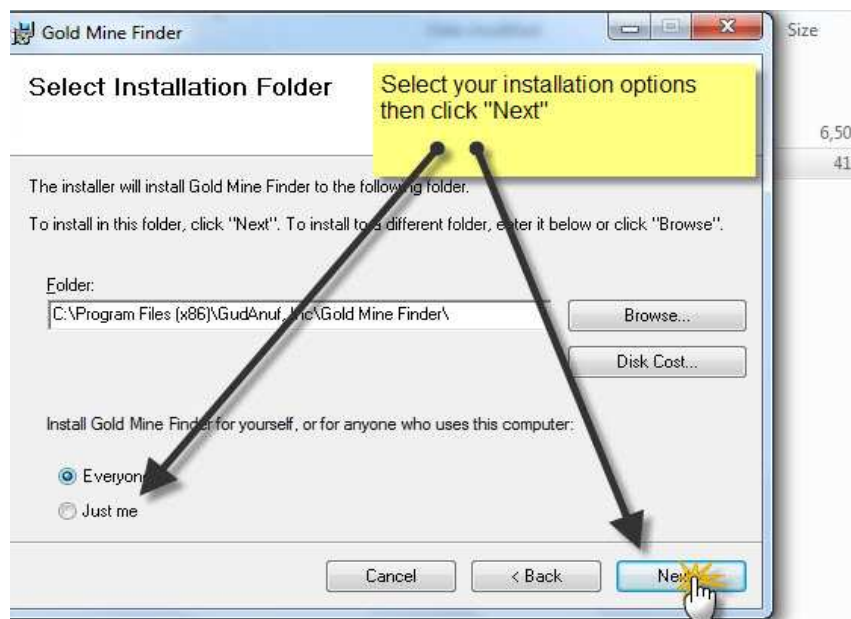
Click “Next” when the setup wizard continues.



2.14 Programme Options for Installation Folder

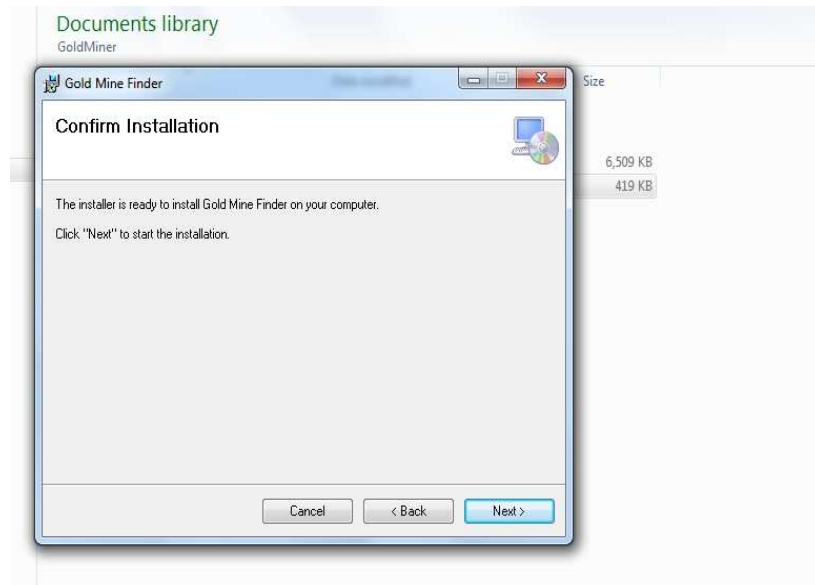
This screen will come up (Windows 7) which asks you to select your Installation folder – unless you are quite computer savvy I suggest you leave the folder as it is.

Select who you would like to access this programme – I chose everyone who uses the computer – then Click "Next"

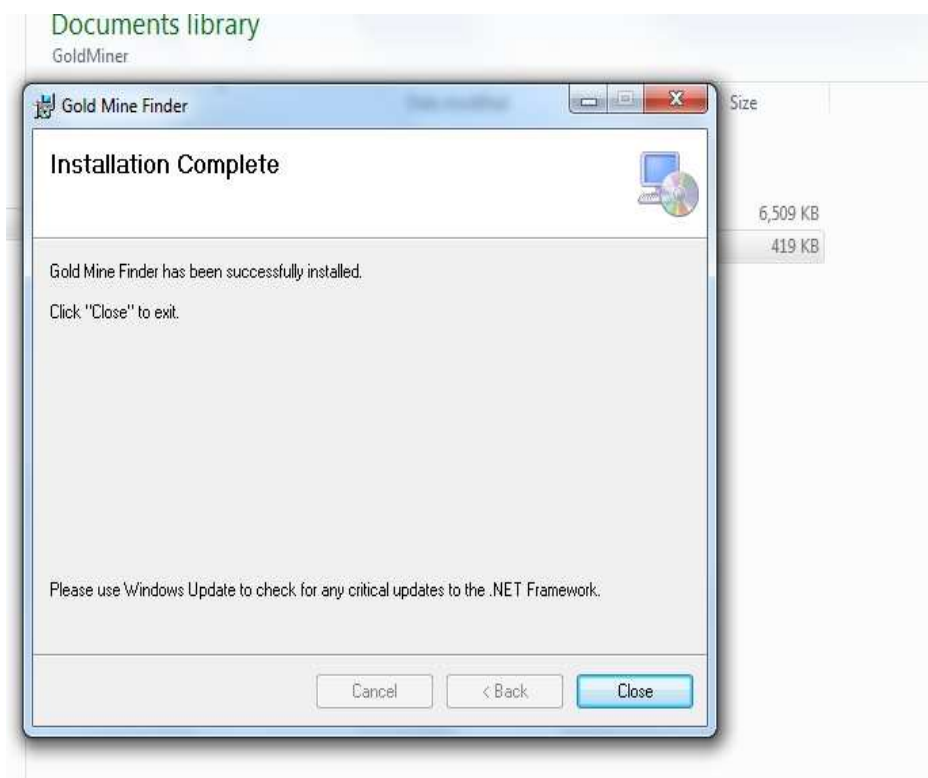


2.15 Confirmation of Installation of Goldmine Finder

Goldmine Finder – Instruction Manual to Find Old Gold Mine Locations in WA



2.16 Installation Complete Screen



2.17 All Installed – Desktop Ikon on PC



When the programme is installed the desktop ikon will appear on your desktop and you will be able to access the programme by clicking that or as outlined in 2.2

2.2 How Access to Goldmine Finder Software on Your Computer After it is Installed

2.21 Use The Goldmine Finder” Icon on your Desktop

Here is a screenshot of the icon that will be on your PC desktop after you have downloaded the Goldmine Finder database.

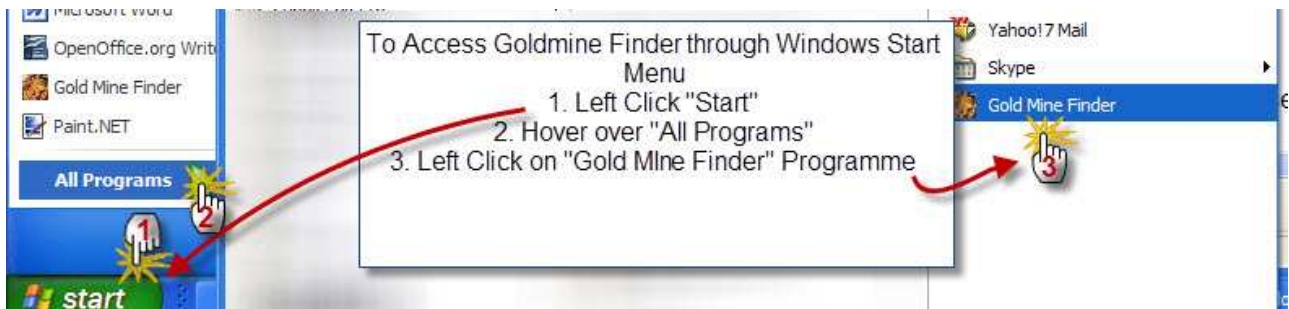


Left Click that and the Goldmine Finder Database will come up on your PC.

NOTE: There is a **large volume of data in the database so depending on how many programmes you have open it may take a minute or so to come up on your screen.**

2.22 Use Windows Program Access

Here is how you access Goldmine Finder using Windows start programmes.



2.23 Home Page View of Gold Minefinder

Here is a Screenshot of the opening page and Instructions to get into Database after you have started Goldmine Finder

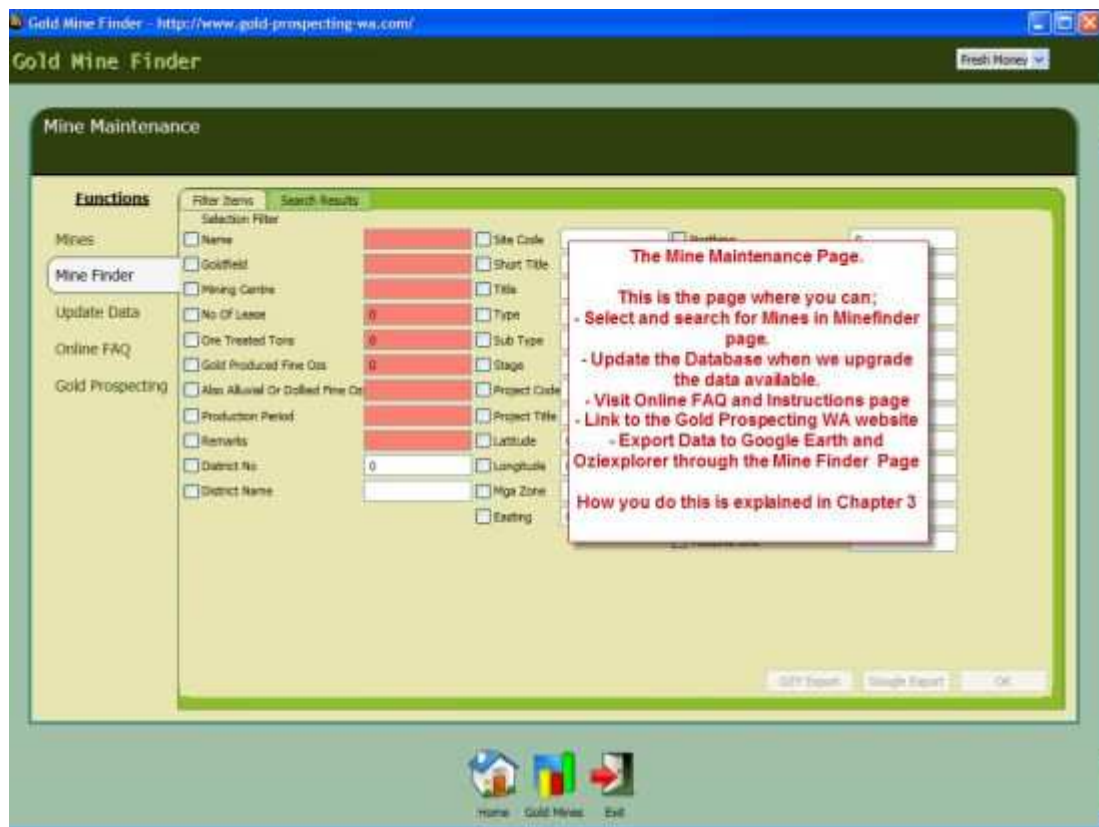


From this screen you can;

- Access the database by Clicking on “Gold Mines” at the bottom menu
- Change the colours of the software to your favourite colour by clicking the arrow at the top right hand side of the home page
- Exit the programme by clicking “Exit”

2.24 The Main 'Mine Maintenance' Page

Now you are into the Powerful Mine Maintenance Page and how you use that is explained in the next chapter.



Go to chapter 3 to see how to use the powerful functions of MineFinder

